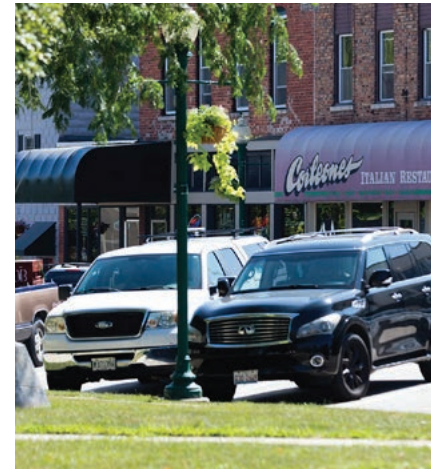


MORRIS TRAILS & PARKING STUDY

CITY OF MORRIS
Morris, IL

BUSINESS LINE(S): URBAN & RURAL PLANNING



OVERVIEW

The City of Morris Downtown Parking & Trails Study provides an evaluation of existing parking, trail, bicycle, and pedestrian conditions to support a safer, more connected, and accessible community. Through detailed field data collection, GIS analysis, policy review, and community engagement, the study establishes a clear, evidence-based understanding of how people move through Morris today and where the system falls short. The plan identifies practical, near-term and long-term strategies to improve downtown parking management, expand trail and sidewalk connectivity, and enhance safety for all users. Together, these recommendations position the City to support downtown vitality, advance equity and accessibility, and guide future investment and implementation efforts.

SCOPE OF SERVICES

- ✓ Data Collection
- ✓ GIS Mapping
- ✓ Field Inventory
- ✓ Parking Analysis
- ✓ Bicycle & Pedestrian Planning
- ✓ Safety Analysis
- ✓ Policy Review
- ✓ Community Engagement

OUTCOMES

- ✓ A comprehensive, data-driven understanding of existing parking, trail, bicycle, and pedestrian conditions across the City of Morris.
- ✓ Clear identification of gaps, safety concerns, access barriers, and underutilized assets within the downtown and citywide network.
- ✓ Actionable, prioritized recommendations for trail connectivity, downtown parking management, and curbside operations.
- ✓ Policy- and design-ready guidance to support implementation, grant applications, and future capital investments.
- ✓ A unified planning framework that supports downtown vitality, equitable access, safety, and multimodal mobility.

