

RAIL OPPORTUNITY PLAN

ST. JOSEPH COUNTY OFFICE OF ECONOMIC DEVELOPMENT

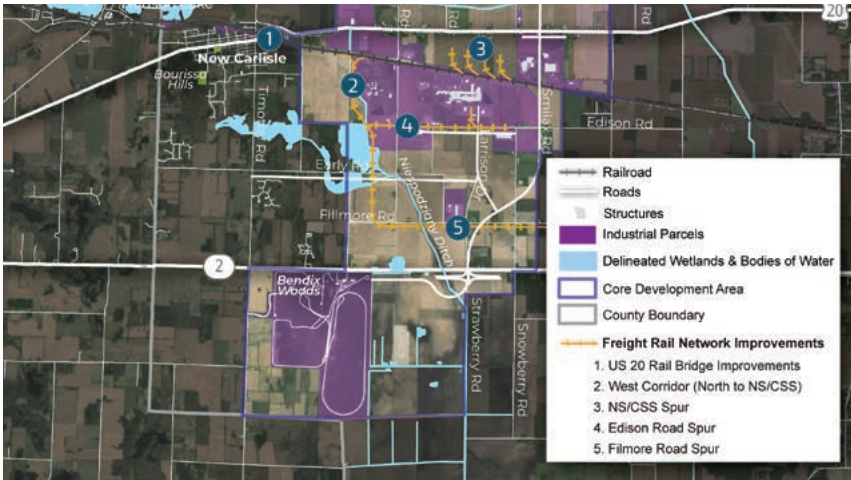
St. Joseph County, Indiana

BUSINESS LINE(S): **URBAN & RURAL PLANNING** | **CIVIL ENGINEERING** | **ECONOMIC DEVELOPMENT**



OVERVIEW

In 2017, the St. Joseph County Office of Economic Development commissioned Antero Group to perform this study in collaboration with the South Bend Regional Chamber of Commerce to identify rail related opportunities within the County. This analysis identified a mix of transportation assets, a diverse economic base, and five opportunity areas with available land for rail-served development. Further, it highlighted ample market opportunities to provide relief from the logistics congestion to the west in Chicago.



SCOPE OF SERVICES

- ✓ Transportation Assessment
- ✓ Logistics Consulting
- ✓ Economic Development Analysis
- ✓ Community Engagement
- ✓ Opportunity Analysis

OUTCOMES

- ✓ A framework for an economic development strategy linked to rail transportation assets in St. Joseph County.
- ✓ Strategic recommendations for the County's five Prime Opportunity Areas.
- ✓ The formation of a Steering Committee, which continues to be involved in the implementation efforts.