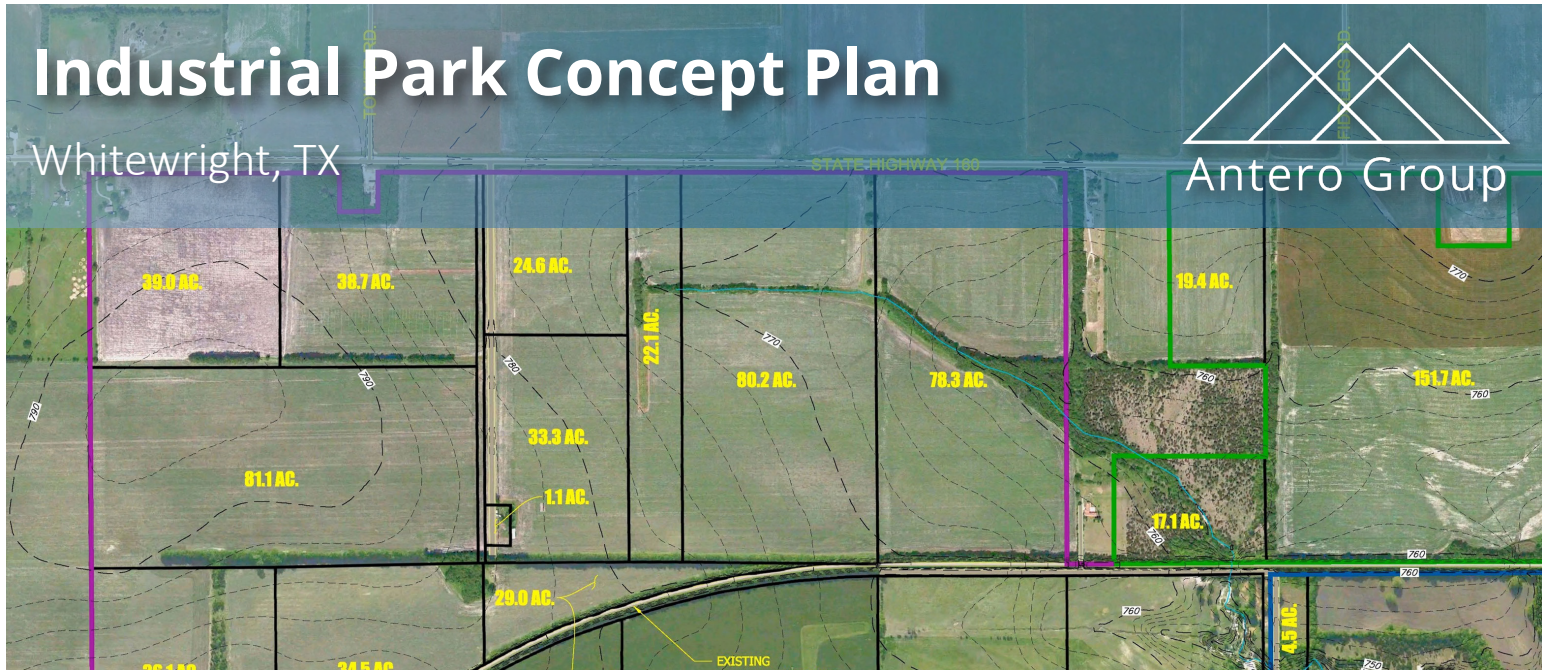
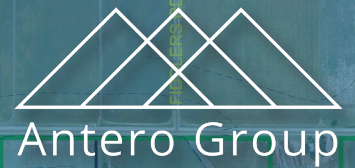


Industrial Park Concept Plan

Whitewright, TX



DETAILS

Client

City of Whitewright

Business Line(s)

Planning + Design

Scope of Services

Collaborative Planning

Site Assessment

Concept Planning

Marketing Material

3-D Rendering

CONTACT

www.anterogroup.com

info@anterogroup.com

312-772-5085

OVERVIEW

The City of Whitewright, TX was considering the annexation of over 1,000 acres to help create an industrial park. Antero was asked to develop a rail-served industrial park concept layout to see how it would layout. Antero coordinated with Genesee & Wyoming Railroad to go over strategies on how to develop spur tracks from the existing line. The end result was a 1,000-acre industrial park created from Infra-works that is currently used to market the site.

OUTCOMES

- Presentation-Quality Concept Plan.
- A 3-D tour of the concept using Infracore.
- A concept plan that will be used to bring in stakeholders.

